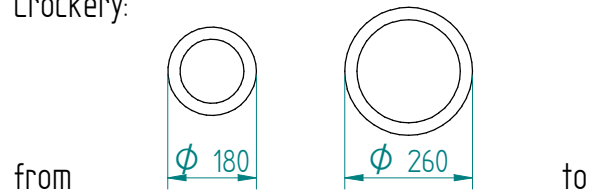


Dispenser: 02.1420.02 TH 280 heated  
heating element 230V-400W

Crockery:



Dimensions: weight (empty): 11 kg

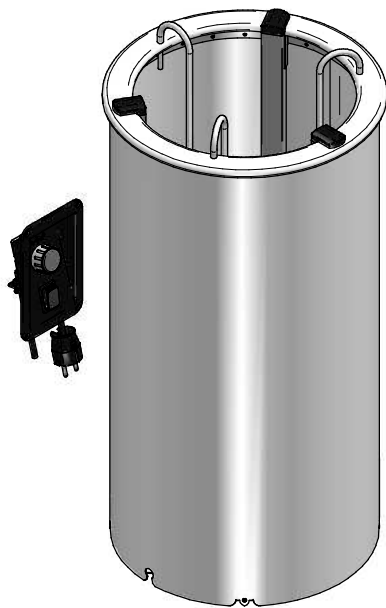
A = flange

E = cut out

H = build in height

S = effective stacking height

y x z = cut out operating panel

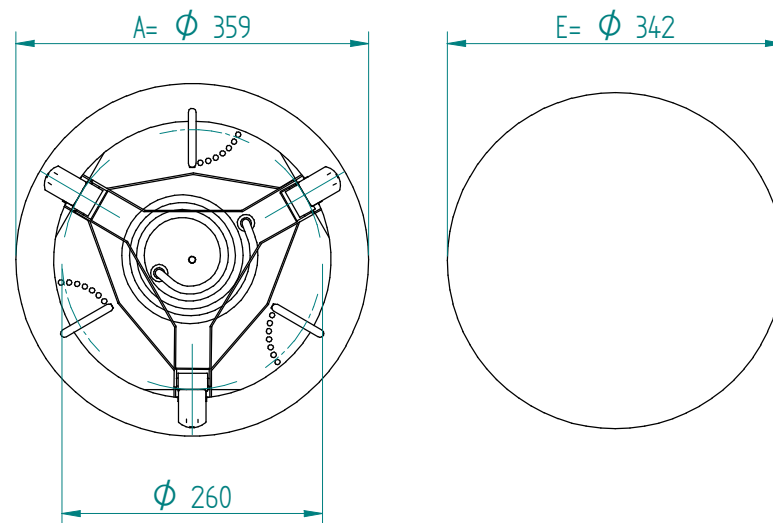


EN

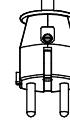
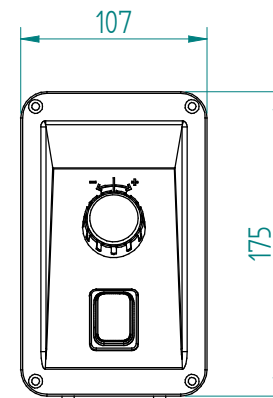
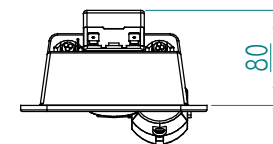
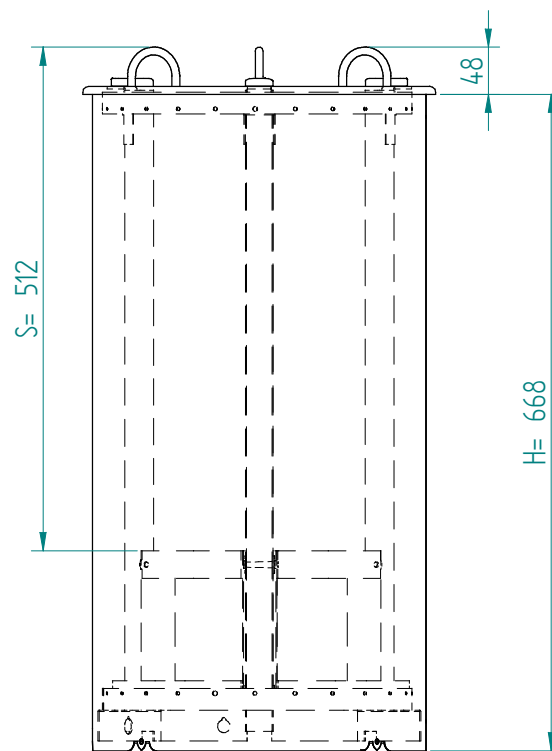
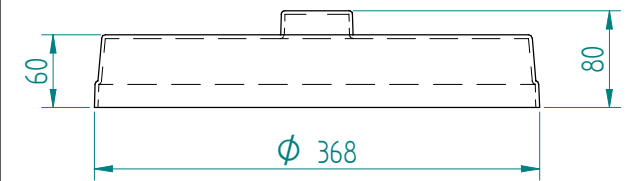
VR :

IR :

**MOBILE** **CONTAINING**

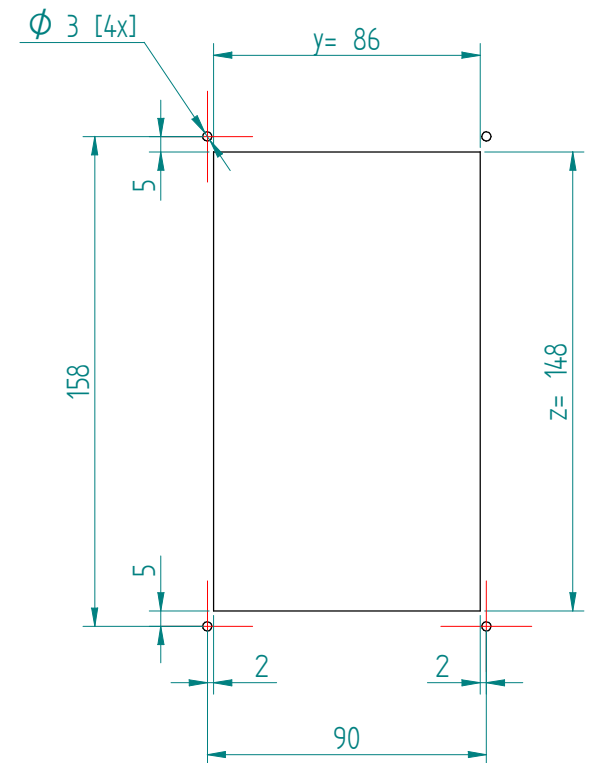


options, order separate;  
pc cover: 91.5031



L1 = ± 1500 mm

L2 = ± 1500 mm



L1 = length cable with plug

L2 = length cable between tube and operating panel